

LA COLLECTION de l'ALPAGA

CHALET KATCHINA

MEGÈVE

- * 5 BEDROOMS – 10 GUESTS
- * HAMMAM AND STUDIO FITNESS
- * LARGE PRIVATE GARDEN AND TERRACE
- * AMAZING VIEW OF MEGÈVE AND MONT BLANC
- * SKI OUT : CHAMOIS SLOPE
- * 5 MINUTES FROM MEGÈVE VILLAGE
- * ELEGANT AND TRADITIONAL



THE CHALET KATCHINA WAS ONE OF THE OLDEST FARMS IN MEGÈVE. IT WAS FULLY RESTORED TWO YEARS AGO IN A CONTEMPORARY STYLE AND OFFERS OUTSTANDING FACILITIES AND COMFORT FOR UP TO 10 GUESTS IN 5 BEDROOMS.

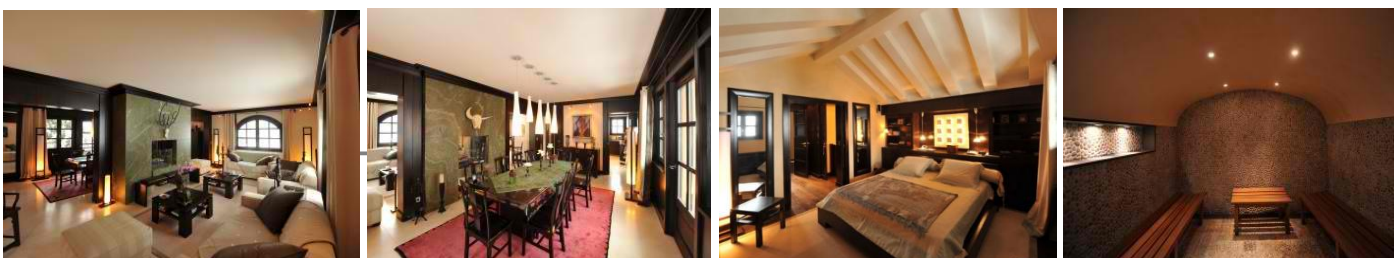
ALL THE BEDROOMS ARE SPACIOUS AND FULLY EQUIPPED TO LUXURY HOTEL STANDARDS WITH A PLASMA TV, SATELLITE AND DVD PLAYER. THE CHALET OVERLOOKS MONT BLANC AND IS SKI OUT ON THE CHAMOIS SLOPE.

ON THE GROUND FLOOR, THERE IS AN ENTRANCE HALL, CLOAKROOM, GARAGE, SKI ROOM, FITNESS ROOM AND A STEAM ROOM. THERE IS ALSO ONE BEDROOM WITH A SHOWER THAT WOULD BE PERFECT FOR A NANNY.

THE FIRST FLOOR, WHICH IS ALSO THE MAIN FLOOR OF THE HOUSE, OPENS ONTO THE TERRACE AND CHAMOIS SLOPE - THIS IS GORGEOUS FOR AN AFTER SKI BREAK WITH A GOURMET PICNIC. THE BEAUTIFUL LIVING ROOM WITH A DOUBLE-SIDED FIRE PLACE IS COSY FOR DINNER. THE SEPARATE, FULLY EQUIPPED KITCHEN IS IDEAL FOR THE CHEF AT YOUR DISPOSAL.

ON THE SECOND FLOOR, THERE ARE THREE LARGE DOUBLE BEDROOMS EACH WITH EN-SUITE BATHROOM.

FINALLY, THE MASTER BEDROOM WITH ITS EN-SUITE DRESSING AND BATHROOM IS ON THE TOP FLOOR AND IS COMPLETELY PRIVATE.



EPM
Elegant Properties Management

ELEGANT PROPERTIES MANAGEMENT - HÔTEL ALPAGA - 66 ALLÉE DES MARMOUSETS
ROUTE DE PRARIAND
74120 MEGÈVE - FRANCE
T +33 (0)4 50 91 48 70 - F +33 (0)4 50 54 65 58
E RESERVATION@ALPAGA.COM - WWW.ALPAGA.COM

ALPAGA
MEGÈVE

RATES - WINTER 2011/2012

SEASON DECEMBER 24 TH 2011 TO JANUARY 8 TH 2012	High SEASON FEBRUARY 11 TH TO MARCH 4 TH 2012	MEDIUM SEASON DECEMBER 17 TH TO DECEMBER 24 TH 2011 JANUARY 8 TH TO FEBRUARY 11 TH 2012 MARCH 4 TH TO MARCH 25 TH 2012	LOW SEASON DECEMBER 1 ST TO DECEMBER 17 TH 2011 MARCH 25 TH TO April 10 TH 2012
7 NIGHTS MINIMUM STAY	7 NIGHTS MINIMUM STAY	7 NIGHTS MINIMUM STAY	7 NIGHTS MINIMUM STAY
FROM 54 015 €	FROM 39 000 €	FROM 33 015 €	FROM 28 010 €

OUR RATES include :

- * WELCOME gift
- * BREAKFAST PREPARED EVERY day
- * GOURMET basket EVERY AFTERNOON
- * CHEF at disposal EVERY day
- * CONCIERGE 24/7
- * PRIVILEGED ACCESS TO THE ALPAQA HOTEL IN MEQÈVE (RESTAURANT LA TABLE DE L'ALPAQA, BAR LOUNGE, WELLNESS CENTRE)
- * CLEANING EVERY day
- * MEET AND GREET
- * CAR AT disposal (4x4, RAV 4)**

*MEAL COSTS EXTRA / ** DRIVER COSTS EXTRA
Public RATE IN EUROS, INCLUDING TAXES AND SERVICES.

Activities and places of interest in the vicinity

- * Skiing
- * Heli skiing
- * CROSS-COUNTRY skiing
- * SNOW golf
- * SNOWSHOE
- * DOG sledding
- * Aiguille du midi, MONTENVERS
- * VISIT MEQÈVE, CHAMONIX MONT BLANC, ANNECY, GENEVA, LAC LÉMAN, MILANO, TURINO

ACCESS

- * GENEVA AIRPORT 55 MINUTES
- * LYON AIRPORT 2 HOURS
- * ALTIPORT OF MEQÈVE 20 MINUTES



ELEGANT PROPERTIES MANAGEMENT - hôtel Alpaqa - 66 allée des MARMOUSETS
ROUTE DE PRARIAND
74120 MEQÈVE - FRANCE
T +33 (0)4 50 91 48 70 - F +33 (0)4 50 54 65 58
E RESERVATION@ALPAQA.COM - WWW.ALPAQA.COM

ALPAQA
MEQÈVE
